

in Hong Kong

Korea Study Mini Expo

韓國升學教育展

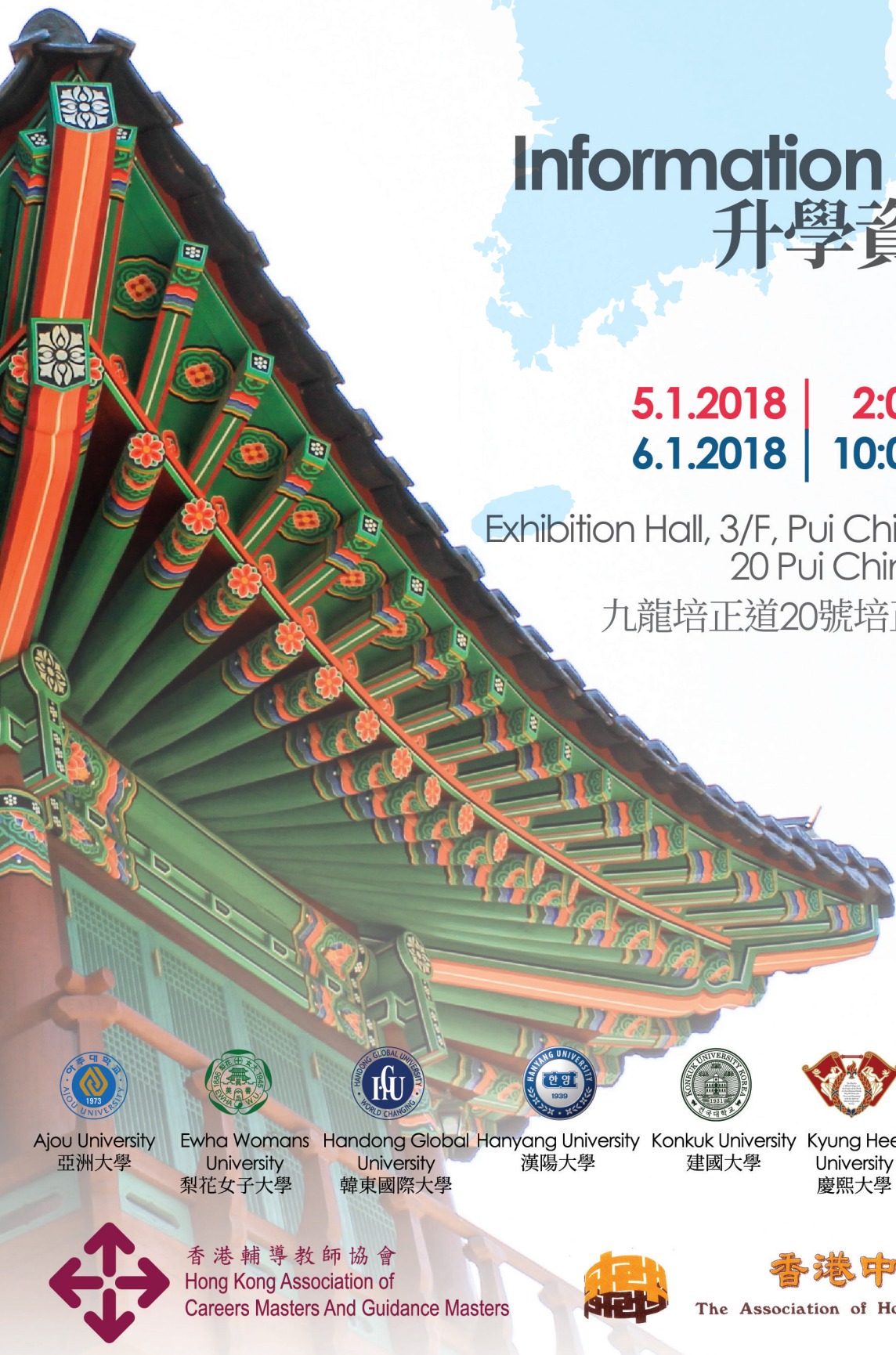


Information Pack

升學資料冊

5.1.2018 | 2:00 pm - 6:00 pm
6.1.2018 | 10:00 am - 5:00 pm

Exhibition Hall, 3/F, Pui Ching Middle School,
20 Pui Ching Road, Kowloon
九龍培正道20號培正中學3樓展覽禮堂



Aju University
亞洲大學



Ewha Womans
University
梨花女子大學



Handong Global
University
韓東國際大學



Hanyang University
漢陽大學



Konkuk University
建國大學



Kyung Hee
University
慶熙大學



Sogang University
西江大學



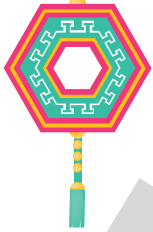
Yonsei University
延世大學



香港輔導教師協會
Hong Kong Association of
Careers Masters And Guidance Masters



香港中文中學聯會
The Association of Hong Kong Chinese Middle Schools



目錄

引言	p 1
香港輔導教師協會簡介	p 2
香港中文中學聯會簡介	p 3
八所參展大學位置	p 4 - 5
韓國語能力考試(TOPIK)	p 6 - 7
八所參展大學升學資料概覽*	
亞洲大學 (Ajou University)	p 8 - 10
梨花女子大學 (Ewha Womans University)	p 11 - 17
韓東國際大學 (Handong Global University)	p 18 - 21
漢陽大學 (Hanyang University)	p 22 - 28
建國大學 (Konkuk University)	p 29 - 33
慶熙大學 (Kyung Hee University)	p 34 - 37
西江大學 (Sogang University)	p 38 - 40
延世大學 (Yonsei University)	p 41 - 45

*大學升學資料概覽按英文字母排序
Universities are listed in alphabetical order



引言

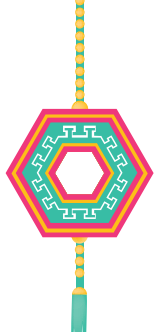
香港新學制自2012年落實以來，不少同學因為未能在本地升讀大學學位課程而考慮海外升學。根據教育局的統計數字，2016年約有5000名香港學生到外地繼續學業，佔整體中六畢業生約一成。

近年「韓流」盛行，南韓的潮流資訊：韓劇、韓國電影、流行音樂(K-Pop)，以致時裝、化妝品、飲食文化等，都令香港人對這國家有了新的認識。不少老師都發現，學校內懂得韓語的同學越來越多，他們有的透過看韓劇自學，亦有一些同學，認真真地在語言學校上課，甚至考取官方韓語TOPIK的資歷。同時，亦有不少同學向升學輔導老師表達希望到南韓升學的想法。

南韓學制與香港甚為不同。香港中學畢業後，可以直接報讀當地大學的本科課程，亦可以先到當地的語言學校修讀韓語，再以韓語的成績報讀。香港輔導教師協會的幾名幹事在2017年7月走訪了亞洲大學、慶熙大學、漢陽大學、西江大學和建國大學五所首爾地區的知名大學，得悉他們非常歡迎香港的學生前往留學。但礙於資訊的不流通和對香港學制的不了解，南韓的大學也遇到來港招生的困難。

因此香港輔導教師協會和以上五所大學一拍即合，再聯同梨花女子大學、韓東國際大學和延世大學及香港中文中學聯會，促成了是次韓國升學教育展。我們希望是次教育展，能夠為升學輔導老師、同學和家長更加了解南韓升學的途徑，讓同學在生涯規劃的旅程當中作充分知情的選擇。

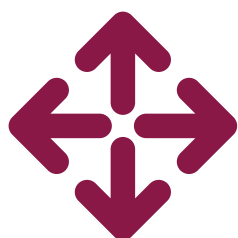
我們亦衷心感謝培正中學借出展覽場地，以及培正專業書院的支援。



香港輔導教師協會簡介

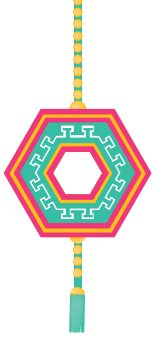
香港輔導教師協會於1959年成立，致力為400間會員學校的前線輔導老師及升學就業輔導老師提供專業支援。協會每年舉辦多場本地及海外升學講座、教師培訓工作坊專業發展課程，並連同不少社福機構和商會為同學提供職場參觀、工作坊及暑期實習等探索工作世界的學習活動。本會更與基督教服務處和教育局合辦「關愛校園獎勵計劃」，表揚在學生成長支援有傑出表現的學校，凝聚前線寶貴經驗。

近年，香港輔導教師協會致力推動生涯規劃的發展，提倡生涯規劃教育需向「專業化、課程化、普及化」的道路邁進。香港輔導教師協會除每年與大專機構共同舉辦升學輔導及生涯規劃教師培訓課程外，更得到課程發展處贊助，聯同多位學者及富有經驗的事業輔導老師合力編寫具本土特色，與事業相關的教材：為初中同學編寫了《尋找生命的色彩》，而高中同學則有《生涯地圖》。更曾進行了數十場公開或校本教師培訓工作坊，幫助老師掌握運用這些工具的竅門和知識，好讓她們能更順利地協助學生規劃人生。協會幹事也積極透過報章和大型講座與大眾分享生涯規劃的訊息。



香港輔導教師協會
Hong Kong Association of
Careers Masters And Guidance Masters





香港中文中學聯會簡介

香港中文中學聯會成立於1984年，為非牟利之文教組織，現有會員學校194所。聯會宗旨為聯繫香港中文中學，促進中文中學之發展，發揚中文教育之優秀傳統及特色，推展健全之教育制度，平衡香港教育重英輕中之局，重現香港中文中學固有之光輝。

香港中文中學聯會成立以來一直積極為學生開拓優質學習平台，近年與中國內地、海峽兩岸、其他海外大學多有合作，讓香港學生有更多學習機會。近年STEM教育興起，香港中文中學聯會亦積極回應，探索更多科創教育平台。



香港中文中學聯會

The Association of Hong Kong Chinese Middle Schools





八所參展大學位置





延世大學

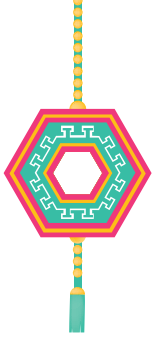
梨花女子大學

西江大學

慶熙大學

漢陽大學

建國大學



韓國語能力考試(TOPIK)

資料來源:TOPIK香港 www.topik-hk.org

考試目的

為非以韓國語為母語的韓國僑民和外國人，指導學習方向並藉此令韓語更為普及。測試和評價韓國語使用能力，並以此為留學韓國或就業的依據。

應考對象

非以韓國語為母語的韓國僑民和外國人(無年齡限制)
計劃留學到韓國人士
往韓國企業或公共機構的求職人士
韓國國外學校在校生或者已畢業的駐外韓國公民

主辦單位

主辦機構:韓國國立國際教育院,駐香港韓國總領事館
執行機構:韓國國際學校

成績有效期

由2012年起,考試成績有效年期為兩年(成績結果發佈日起計)。

過往試題

可於韓國官方互聯網 <http://www.studytopik.go.kr> 下載。

應考水準和等級

應考水準:TOPIK I, TOPIK II
評價等級:6個等級(1-6級)

應考水準	TOPIK I		TOPIK II			
	1級	2級	3級	4級	5級	6級
等級決定	80分以上	140分以上	120分以上	150分以上	190分以上	230分以上

試題結構和考試時間(由2017年起)

聽解和讀解之問題全為選擇題。四答案中選一。

考試等級	節數	試題結構(時間)	問題數目	得分	總分	入座時間	開考時間	完結時間
TOPIK I 1-2級	只有一節	聽解(40分鐘)	30	100	200	08:15-08:40	09:10	10:50
		讀解(60分鐘)	40	100				
TOPIK II 3-6級	第一節	聽解(60分鐘)	50	100	300	11:25-11:50	12:20	14:10
		寫作(50分鐘)	4	100				
	第二節	讀解(70分鐘)	50	100				

* 08:40 / 11:50 後進入課室則不得參加考試 *





寫作評分 (TOPIK II)

寫作則分為做句和作文。

- 兩題完成句子，兩題作文(3或4級要求200-300字；5或6級要求600-700字)。

等級		目標
TOPIK II	3級	評估是否能把熟悉的社會上熱門話題，相對準確恰當地以段落描述。並評估能否把有關個人日常生活的實用文配合環境使用。
	4級	評估是否能把社會背景和常見或熟悉社會內容準確恰當地以段落描述或評論。
	5級	評估是否能把社會，抽象素材，商業或專業知識相對準確恰當地以文章論述。
	6級	評估是否能把社會，抽象素材，商業或專業知識準確恰當地以文章論述。

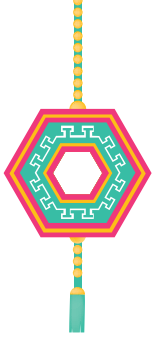
出題基本方針

測試運用現代韓語的能力。

- 在各領域及內容上均衡地選題。
- 提高考生理解韓國文化和社會。
- 廣泛參考韓國內外韓國語教育機構之韓語課程。
- 避免對特定語言圈的考生帶來嚴重的不利或有利。

各等級基本要求

等級		標準
TOPIK I	1級	<ul style="list-style-type: none"> · 可以完成“自我介紹，購物，點菜”等日常生活中必需的基礎會話，並且可以理解和表達對“個人，家庭，愛好，天氣”等一般話題。 · 能掌握約800個常用詞匯，認識基本語法並能造出簡單句子。 · 能製造和理解簡單的生活文章和實用文章。
	2級	<ul style="list-style-type: none"> · 能在“打電話，求助”等日常生活，以及利用“郵局，銀行”等公共設施上使用韓語。 · 能掌握約1500-2000個詞匯，能了解個人熟悉的話題，並以段落表達出來。 · 可區分使用正式或非正式場合的語言。
TOPIK II	3級	<ul style="list-style-type: none"> · 在日常生活上沒有語言困難，並能使用各種公共設施及進行社交活動。 · 明白自己熟識的話題和社會上熱門的話題，並以段落表達出來。 · 能區分及使用口語和書面語。
	4級	<ul style="list-style-type: none"> · 能使用公共設施，並進行社交活動，並執行某些職務。 · 理解電視新聞和報紙中的評論內容。 · 並能流暢表達一般社會性和抽象的話題。 · 能理解常用的慣用語和韓國代表文化，並藉此了解和表達社會和文化方面的內容。
	5級	<ul style="list-style-type: none"> · 具備在專業領域上進行研究或擔任業務的語言能力。 · 可運用語言技巧於不熟識的主題如政治，經濟，社會，文化等。 · 正確使用正式，非正式和口語，書面語。
	6級	<ul style="list-style-type: none"> · 具備正確和流暢地在專業領域上進行研究或擔任業務的語言能力。 · 可運用語言技巧於不熟識的主題如政治，經濟，社會，文化等。 · 雖未能達到母語使用者的水平，但在執行任務和表達能力上沒有困難。



八所參展大學升學資料概覽

Universities in Korea for the Admission of International Students

<http://www.ajou.ac.kr/en/>

Ajou University

亞洲大學

A

Basic information

Address	206 Worldcup-ro, Yeongtong-gu, Suwon, 443-749, Korea
Type of university	Private
Brief introduction of the university	Being one of the leading research universities in Korea, Ajou University has 11 different colleges including Engineering, Information Technology and Business. In 2016, Ajou University is ranked 22nd in the Asia's Most Innovative Universities Ranking evaluated by Reuters headquartered in London, Britain. Ajou University is recognized by the Korean Government for excellent management and services for international students.
Contact person	Andrew Doyeon Kim, Coordinator Office of International Affairs Email: dyk@ajou.ac.kr Phone no.: +82 1051059327 (Mobile)
Undergraduate programs conducted in Korean	11 Colleges : Engineering, Information Technology, Natural Science, Business, Humanities, Social Sciences, Law, Medicine, Nursing, Pharmacy, International Studies (37 Departments)
Undergraduate programs conducted in English	-

B

Tuition fees

Registration fee: ₩900,000

Programs	Tuition fees (Each term)
Faculty of Engineering, Information Technology	₩4,426,000 (appx USD 4,000)
Faculty of Natural Science	₩3,916,000 (appx USD 3,500)
Faculty of Business	₩3,440,000 (appx USD 3,100)
Faculty of Humanities, Social Sciences	₩3,440,000 (appx USD 3,050)

C

Dormitory (for international students)

Type	Single room	Double room	4-people room
Fee (4months)	₩1,600,000	(Int' dorm) ₩1,160,000 (Hwahong) ₩885,000	(Hwahong) ₩600,000 (Namje) ₩535,000
Eligibility (for international students)	-	-	-

D

Admissions to undergraduate programs

D1 Requirements

1 Language	Korean: Topik Level 3 * Have completed (or expected to complete) Korean language level 3 or have completed(expected to complete) Ajou Foundation Program(AFP) stage 3
2 Nationality	All except Korean
3 Qualifications	Graduation of S6
4 Financial status	Applicant's or sponsor's bank certificate indicating minimum deposit of USD 20,000
5 Submission of portfolio	-
6 Written test	-
7 Interview arrangement	-
8 Documents for submission	(1) High school graduation certificate, (2) High school transcript, (3) Legal, state-issued certificate of family registry, (4) A copy of ID card, (5) passport, (6) Korean Language Test Score, (7) Bank Statement/Certificate

D2 Application timeline to undergraduate programs

Application period	Admissions period	Tuition (₩)
Apr - May	Sep	₩3,440,000 (appx USD 3,050)~₩4,426,000 (appx USD 4,000)
Oct - Nov	Mar	₩3,440,000 (appx USD 3,050)~ ₩4,426,000 (appx USD 4,000)

Web link to application information: <http://www.ajou.ac.kr/en/>

D3 Scholarships for international/Hong Kong Students to undergraduate programs

Year one student	TOPIK Level 3 : 30% of the tuition fee TOPIK Level 4 : 50% of the tuition fee TOPIK Level 5 : 70% of the tuition fee TOPIK Level 6 : 100% of the tuition fee
Current student	30-100% of the tuition fee based on the academic performance of those with a completion of 15 credits or above

E

Admissions to Korean Language Program

Term	Period	Level
Spring, Summer, Fall, Winter	10 weeks per term	Levels 1 - 6

E1 Requirements

1 Language	-
2 Nationality	All except Korean
3 Qualifications	Graduation of S6
4 Financial status	<ul style="list-style-type: none"> The Balance must be over 9,000USD and be indicated officially in USD by the relevant bank Certificate should be issued within one month from now.
5 Submission of portfolio	-
6 Written test	-
7 Interview arrangement	-
8 Documents for submission	Application form, Two photos, Diploma for the highest level & Transcript, Family Certificate or Birth Certificate, Passport copy

E2 Application timeline

Application period	Admissions period	Tuition (₩)
1 Spring Mar 8 ~ May 16	Jan 12	₩1,400,000 (1 semester)
2 Summer Jun 8 ~ Aug 16	Apr 6	₩1,400,000 (1 semester)
3 Fall Sep 6 ~ Nov 14	Jul 6	₩1,400,000 (1 semester)
4 Winter Dec 6 ~ Feb 13	Oct 5	₩1,400,000 (1 semester)

Application fee: ₩60,000, Insurance fee: ₩80,000
1 term with 200 contact hours

E3 Scholarships for international/Hong Kong Students to Korean language programs

Program-Best Scholarship A student with the highest score in all levels will get 50% tuition waiver for the following semester.

Level-Best Scholarship

- The best student in each level will get 10% tuition waiver for the following semester.
- The enrolled students who recommend this institute to friends will get the special scholarship (The maximum of scholarship is ₩200,000).
₩50,000/ one term
₩100,000/ two terms

F Principal nominations of member schools of Hong Kong Association of Careers Masters and Guidance Masters (if any)

Quota for each school Nil

G Highlights of the university (e.g. signature programs, achievements and special support to international students...etc.)

Nil



A

Basic information

Address	52 Ewhayrodæ-gil, Seodaemun-gu, Seoul, 03760, Korea
Type of university	Private
Brief introduction of the university	Ewha is one of the Korea's oldest and most prestigious research universities with a 131 year history. As the best and biggest comprehensive women's university in the world, we have 25,000 students currently studying in our 14 colleges and 15 graduate schools, and offer 72 majors with more than 300 English-taught courses every semester.
Contact person	JiYoung Cho, Program Coordinator Office of International Affairs, Ewha Womans University Email: isadmit@ewha.ac.kr Phone no.: +82 2 32776988
Undergraduate programs conducted in Korean	Please refer to Appendix 1
Undergraduate programs conducted in English	<ul style="list-style-type: none"> • Division of International Studies: all courses are taught in English • Business Administration, English Language and Literature: 50% of courses are taught in English • Overall, 30% of courses are taught in English, but the proportion of English-taught courses can vary among majors.

B

Tuition fees

Entrance fee: HKD7,000

Programs	Tuition fees (Each term)
Liberal Arts/ Social Sciences and Business Administration	HKD25,000
Natural Science/ Engineering/ Health Science	HKD30,000
Art and Design/ Music	HKD35,000

C

Dormitory (for international students)

Type	Single room	Double room	3-people room	4-people room
Fee	HKD10,500	HKD9,000	HKD8,400	HKD7,300
Eligibility (for international students)	The Office of Admissions will help you apply for prior entrance to dormitory in the first semester. We are trying our best to make sure of supplying enough dormitory for international students.			

D

Admissions to undergraduate programs

D1 Requirements

1 Language	Korean (TOPIK Level 3 or above) or English (IELTS Level 5.5 / TOEFL [iBT] 80)
2 Nationality	Female foreign (not Korean) nationals, provided both parents have foreign nationality
3 Qualifications	Applicants must have acquired high school diploma before start of the first semester
4 Financial status	-
5 Submission of portfolio	For art and design programs
6 Written test	-
7 Interview arrangement	For scholarship recipients only
8 Documents for submission	Please refer to Appendix 2

D2 Application timeline to undergraduate programs

Application period	Admissions period	Tuition
Mar – Apr	Sep	Application Fee: HKD1,200
Sep	Mar	Application Fee: HKD1,200

Web link to application information: <http://admission.ewha.ac.kr/enter/doc/international/main.asp>

D3 Scholarships for international/Hong Kong Students to undergraduate programs

Year one student	<ul style="list-style-type: none"> • ISS F Scholarship: Full tuition fee coverage (payment period varies from 1 to 4 years) for applicants who demonstrate high potential to become a female leader • ISS HH1 Scholarship: Half of the tuition fee deduction on the first semester for applicants who submit TOPIK LEVEL 6 transcript within the application period
Current student	<ul style="list-style-type: none"> • ISS M scholarship: 25-80% of the tuition fee deduction based on the academic performance of those with a completion of 15 credits or above • ISS V scholarship: 25-35% of the tuition fee deduction based on the working time and type at Office of International Affairs

E

Admissions to Korean Language Program

Term	Period	Level
Intensive Program (Spring, Summer, Fall, Winter)	10 weeks per term	Levels 1 - 6

E1 Requirements

1 Language	-
2 Nationality	Foreigners or ethnic Korean overseas
3 Qualifications	Holder of at least high school diploma and no gender restriction
4 Financial status	Bank statement under applicant's name with more than USD9,000 (based on two semesters registration) in case of D-4 visa application
5 Submission of portfolio	-
6 Written test	There will be a placement test.

7 Interview arrangement	There will be a placement test.
8 Documents for submission	Application, A copy of passport, A graduation (or enrollment) certificate of the most recently attended school, a copy of insurance certificate, Bank statement under applicant's name with more than USD9,000 (based on two semesters registration) in case of D-4 visa application

E2 Application timeline

Application period	Admissions period	Tuition
one month prior to the beginning of classes	Mar, Jun, Sep, Dec	HKD12,500

Entrance fee: HKD450 (~~₩60,000~~)

Tuition fee: HKD12,500 (~~₩1,720,000~~) (200 hours total per 1 term)

E3 Scholarships for international/Hong Kong Students to Korean language programs

Scholarship for Outstanding Korean Learners Supporting 50% of tuition fees for the attendees of the Intensive Program who receive the best grades in each level and re-register for the next semester.

ELC Scholarship of Excellence in Korean Language Supporting ₩1,000,000 (HKD7,000) for two of international freshman students (transfer students and not eligible) of Ewha Womans University who have both passed at least three semesters and completed level six of the Korean Intensive Program at Ewha Language Center.

* Benefits of scholarships above cannot overlap.

F Principal nominations of member schools of Hong Kong Association of Careers Masters and Guidance Masters (if any)

Quota for each school There is no exact quota for the number of international students to be admitted. Candidates are selected upon review of their academic ability, through a special admission process for foreign students. Since we have seen that most of the Hong Kong students adjust in Korea well achieving academic success, we try to give positive response to applicants from Hong Kong.

Requirements of candidates (e.g. predicted score in HKDSE) -

Special considerations HKDSE score is not mandatory but in case of submission, the Admission Committee members will take it into consideration in screening and in selecting scholarship recipients.

*** Submission deadline or logistics** Admission, including conditional admission, will be notified within 2-3 months of submitting your application. Applicants who are accepted conditionally should submit their TOPIK result or Certificate of Completion (Korean Intensive program Level 4) from Ewha Language Center during the specified period. If she doesn't submit or the result doesn't meet our language requirements, the acceptance would be cancelled.

Remarks -

G Highlights of the university (e.g. signature programs, achievements and special support to international students...etc.)

Signature programs	Ewha Womans University is well known for its high quality of education in overall fields, and it is specifically famous for Communication & Media and English Language & Literature. We have international students in various divisions, and the most popular majors for international students are Communication & Media, International Studies, and Business Administrations.
Achievements	Faculty members and students of each division has earned countless achievement. On the top of that, Ewha was ranked number 1 in Leiden Ranking among Korean Universities in 2013-2016. Also, Ewha has been selected by Ministry of Education, Korea, as one of the Best Universities in Korea for its capacity to host and support international students for years.
Special support for international students	Ewha offers legal advice, and student counseling in English for international students who cannot speak Korean. Moreover, Office of International Affairs have various programs/services to help international students adjust in Korea, and the programs/services are as follows: Mentoring, Course Registration Support Service, Fee Support for Summer TOPIK Prep Course, Field Trip and Korean Culture Experience, Happy Hour (free lunch with mentors), etc.

Appendix 1

Ewha Womans University - Undergraduate Programs (Undergraduate Freshmen)

- * This information may possibly change without notice. Please confirm it before starting online application.
- * Undergraduate applicants should specify the applying Department/Major. If there is no Department/Major distinction shown in the form below, applicants should specify the applying Unit/Division.
- * Undergraduate applicants could apply for maximum two majors. However, applicants to College of Music, College of Art & Design and Division of Kinesiology & Sports Studies could only apply one major.

College	Unit/Division	Department/Major
College of Liberal Arts	College of Liberal Arts	Korean Language & Literature, Chinese Language & Literature, French Language & Literature, German Language & Literature, History, Philosophy, Christian Studies
	Division of English Language & Literature	
College of Social Sciences	College of Social Science	Political Science & International Relations, Public Administration, Economics, Library & Information Science, Sociology, Social Welfare, Psychology, Consumer Studies
	Division of Communication & Media	
College of Natural Sciences	College of Natural Science	Mathematics, Statistics, Physics
	Division of Molecular Life & Chemical Sciences	Chemistry & Nano Science, Life Sciences

College	Unit/Division	Department/Major
ELTEC College of Engineering	Division of Mechanical and Biomedical Engineering	
	Division of Software Science and Engineering	Computer Science and Engineering, Cyber Security
	Division of Advanced Technology	Electronic and Electrical Engineering, Chemical Engineering and Materials Science, Food Science and Engineering
	Division of Sustainable Systems Engineering	Climate and Energy Systems Engineering, Environmental Science and Engineering, Architectural and Urban Systems Engineering, Architecture
College of Music	College of Music	Keyboard Instruments, Orchestral Instruments, Voice, Composition, Korean Music
	Department of Dance	
The College of Art & Design	Division of Fine Arts	Korean Painting, Painting, Sculpture, Ceramic Arts
	Division of Design	
	Division of Fiber & Fashion	Fiber Arts, Fashion Design
The College of Business Administration	Division of Business Administration	
The College of Science & Industry Convergence	Department of Content Convergence	
	Department of Fashion Industry	
	Department of International Office Administration	
	Department of Nutritional Science & Food Management	
	Department of Health Convergence	
The College of Nursing	Division of Kinesiology & Sports Studies	Sports Science, Global Sports Management
	Division of Nursing	Nursing, Global Health & Nursing
Scranton College	Division of International Studies	International Studies, Korean Studies

* Please note that all courses in the Division of International Studies at Scranton College (International Studies, Global Korean Studies) are conducted in English. Except for the Division of International Studies, the proportion of English-taught courses can vary among majors and there may be more Korean-taught courses than English-taught classes.

Appendix 2

Ewha Womans University - Required Documents

Documents to be submitted	Notes
One Application form [Form 1] <i>mandatory</i>	<ul style="list-style-type: none">• Should be written in Korean or English• Complete the online application and submit the printed application form
One Application Supplement [Form 2] <i>mandatory</i>	<ul style="list-style-type: none">• Should be written in Korean or English• Complete the online application and submit the printed application form• Should submit the documentary evidences (Should submit the original, a copy of document which has Ewha/ issuing organization's/embassy's confirmation of its authenticity that can be recognized) to the things you wrote on it<ol style="list-style-type: none">(1) Academic ability : secondary school graduation examination, college entrance examination or other standardized academic test(SAT, ACT, A Level, IB, 高考(Gaokao), National Center Test for University Admissions, etc.)(2) Language proficiency :transcript of standardized test (TOPIK, TOEFL, IELTS, TEPS, etc.), certificate of attendance or transcript of Korean language program(3) Activities : award, thesis, abstract, certificate of employment
Minimum of Two Letters of Recommendation [Form 3] <i>mandatory</i>	<ul style="list-style-type: none">• Should be written in Korean or English• One recommendation letter must be from the university professor or the teacher of the secondary school the applicant attended.• Recommendation letters may be sent with other documents to be submitted, but must be sealed and signed across the back by the recommenders• The GaoKao (For Chinese Students) score transcript can replace one recommendation letter
Consent form to check-up the level of education [Form 4] <i>mandatory</i>	<ul style="list-style-type: none">• Should be written in English• One for the school the applicant last attended with applicant's written signature on the form
Scholarship Application [Form 5]	<ul style="list-style-type: none">• Mandatory for scholarship applicants• Should be written in Korean or in English• Ewha Language Center Scholarship in Excellence in Korean Language applicants must submit completion certificate (at least more than 3 semesters, including certificate of Level 6) of Ewha Womans University Language Center
An Official Transcript of Academic Records and a Certificate of (Prospective) Diploma [Original] <i>mandatory</i>	<ul style="list-style-type: none">* a copy of document which has Ewha/ issuing organization's/embassy's confirmation of its authenticity that can be recognized• Undergraduate Freshmen: Official high school transcript and (prospective) diploma.• Undergraduate Transfer: Official high school transcript and diploma, Official undergraduate transcript and certificate of attendance• Master's, Combined Master's and Doctorate: Official Undergraduate transcript and (prospective) diploma

	<ul style="list-style-type: none"> • Doctorate: Official undergraduate transcript and diploma, Official Master's transcript and (prospective) diploma * Admitted students must submit the "Confirmation documents from a foreign educational institute", or "Confirmation document from consulate or embassy" which are certified and verified by the Korean Embassy where the institution is located.
Documents validating language proficiency [Original] mandatory	<ul style="list-style-type: none"> • TOPIK level 3 or above (undergraduate freshmen), TOPIK level 4 or above (undergraduate transfer, graduate)(Those who plan to take the 48th TOPIK or 49th TOPIK can submit the test identification first with other required documents, and then submit the official transcript by December, 23, 2016) • A certificate of completion of Level 4 from Ewha Language Center Korean Intensive Program (Those who are taking course level 4 can submit the certificate of attendance first with other required documents, and then submit the official certificate of completion as soon as the course complete) • TOEFL (PBT 550, iBT 80), IELTS 5.5, TEPS 550 or above • High school or university's curriculum (to check if they use Korean or English in their academic programs)
Passport copies of the applicant and both parents [Copy] mandatory	<ul style="list-style-type: none"> • Other official documents attesting to the nationality of the applicant and both parents are accepted if they don't have passports (Those who don't submit a copy or applicant's passport when applying should submit it after the acceptance of our admission) • Chinese applicants need to submit the following documents when they send required admissions documents to the Office of Admissions. (1) A copy of ID card (2) Copies of parents' ID cards (3) A copy of household register (with whole family members on it) • Applicants who obtained foreign nationality need to submit documents that verify their(applicant and both parents) date of obtaining the foreign nationality and losing of Korean nationality
A copy of Alien Registration Card issued by Korean government [Copy]	<ul style="list-style-type: none"> • Mandatory for foreigners who have alien registration card • Copies of both front and back page of the card
Official documents that verify the family relationship between the applicant and both parents [Original] mandatory	<ul style="list-style-type: none"> • (ex) family-relationship certificate, birth certificate • The documents that are not in Korean or English must be translated to Korean or English and the copy must be submitted with certification from a notary
Materials showing evidence of the applicant's artistic or athletic ability [Original] mandatory for applicants to Art & Athletic fields	<ul style="list-style-type: none"> • Mandatory for applicants applying to Art & Athletic field (The College of Music, The College of Art & Design, Division of Human Movement Studies) • (ex) portfolios, videotapes • Applicants applying to The College of Art & Design should submit print out materials(less than 20 sheets of A3 or A4 size)
A certificate of former employment [Original]	<ul style="list-style-type: none"> • Mandatory for applicants applying to Law-Combined Master's and Doctorate, Nursing graduate program

A

Basic information

Address	558 Handong-ro Buk-gu, Pohang, Gyeongbuk 37554 Republic of Korea
Type of university	Private
Brief introduction of the university	Handong Global University is amongst the top universities in the country with the #1 retention rate and #1 in character building, offering majors in English to international students. We have 13 departments and 30 majors, and through our Global Convergence Studies we now have over 300 majors. (Double major is mandatory.)
Contact person	Esther Kim, Senior Admissions Officer Admissions Team Email: eskim@handong.edu Phone no.: +82-54-260-1806
Undergraduate programs conducted in Korean	<p>Humanities and Social Sciences</p> <p>School of International Studies, Languages and Literature: International Area Studies / English</p> <p>School of Management and Economics: Management / Economics</p> <p>School of Law: Korean Law</p> <p>School of Communication Arts & Science: Mass Communication / Visual and Performing Arts</p> <p>School of Counseling Psychology and Social Welfare: Counseling Psychology / Social Welfare</p> <p>School of Creative Convergence Education: Student Design Convergence Studies / Global Innovation</p> <p>Engineering and Arts</p> <p>School of Life Sciences: Life Science</p> <p>School of Computer Science and Electronic Engineering: Computer Science and Engineering/ Advanced Computer Science and Engineering / Electronic Engineering / Advanced Electronic Engineering</p> <p>School of Mechanical and Control Engineering: Mechanical Engineering / Electronic Control Engineering</p> <p>School of Spatial Environment System Engineering: Construction Engineering / Urban and Environmental Engineering</p> <p>School of Contents Convergence Design: Visual Communication Design / Product Design</p> <p>School of Global Entrepreneurship and Information: Communication Technology / Enterprise Development & System Engineering / Global Entrepreneurship / Information Communications Technology Convergence</p> <p>School of Creative Convergence Education: Student Design Convergence Studies / Mathematics and Statistics</p>
Undergraduate programs conducted in English	Global Management US and International Law Information Technology Global Convergence Studies Global Korean Studies



B

Tuition fees

Programs	Tuition fees (Each term)
Global Leadership School (all Freshmen)	₩3,661,000 / HKD 25,250
Humanities and Social Science	₩3,019,000 / HKD 20,820
Engineering and Arts	₩3,874,000 / HKD 26,720

C

Dormitory (for international students)

Type	4-people room
Fee	₩700,000 / HKD 4,850
Eligibility (for international students)	All freshmen can enter the dormitory

D

Admissions to undergraduate programs

D1 Requirements

1 Language	(Optional, not mandatory) Korean proficiency: TOPIK Level 3 or higher English proficiency: TOEFL – PBT 550, CBT 210, IBT 80; IELTS 5.5; TEPS 550; TOEIC 700 or higher
2 Nationality	All international students(except Korean citizenship holders)
3 Qualifications	Graduation of F6
4 Financial status	-
5 Submission of portfolio	-
6 Written test	-
7 Interview arrangement	Only those who pass the preliminary document evaluation (Step 1) will be eligible for an interview (Skype)

8 Documents for submission

Documents to be submitted (Submit documents that are applicable)		Official Form of HGU	Form No.	Type	
				General	Handong Cornerstone
1	Application Form	<input type="radio"/>	Form 1	<input type="radio"/>	<input type="radio"/>
2	The Letter of Self-introduction	<input type="radio"/>	Form 2	<input type="radio"/>	<input type="radio"/>
3	The Honor Pledge	<input type="radio"/>	Form 3	<input type="radio"/>	<input type="radio"/>
4	Official High School Transcript <i>* Full marks/GPA must be written on the transcripts.</i> <i>* Admitted students who completed high school education abroad are required to submit transcript that is notarized by either Apostille standards or the Korean embassy/consulate</i>			<input type="radio"/>	<input type="radio"/>
5	(Expected) Official High School Graduation Certificate <i>* Admitted students who completed high school education abroad are required to submit High Graduation Certificate that is notarized by either Apostille standards or the Korean embassy/consulate</i>			<input type="radio"/>	<input type="radio"/>
6	Official document(s) indicating the applicant's nationality (e.g. Birth certificate, Passport copy)			<input type="radio"/>	<input type="radio"/>

7	Official document(s) indicating the parents' nationality (e.g. Passport, Copy of ID card, etc.)			o	o
8	Official document(s) indicating parent-child relationship between applicant and his/her parents such as parent-child and husband-wife relationship			o	o
9	Letter of Consent	o	Form 4	o	o
10	Financial Statement	o	Form 5	o	x
11	A bank statement with a minimum balance of \$10,000 in the applicant's/guardian's name (deposited for more than one month)			o	x
12	Handong Cornerstone Scholarship Application Form	o	Form 6	x	o
13	Recommendation Letter · Recommender: missionary, pastor from attending church, principal/teacher from graduating school	o	Form 7	o	o
14	Proof of Korean or English Language Proficiency · Korean proficiency: TOPIK Level 3 or higher · English proficiency: TOEFL - PBT 550, CBT 210, IBT 80; IELTS 5.5; TEPS 550; TOEIC 700 or higher			Optional	Optional
15	Reports of standardized test scores (SAT/IB/AP/GCE/A-Level or equivalent), certificates (awards, volunteer work, extra-curricular activities, etc.), school profile			Optional	Optional

D2 Application timeline to undergraduate programs

Application period	Admissions period	Tuition (₩)
Apr	Sep	₩3,661,000 / HKD 25,250
Oct – Nov	Mar	₩3,661,000 / HKD 25,250

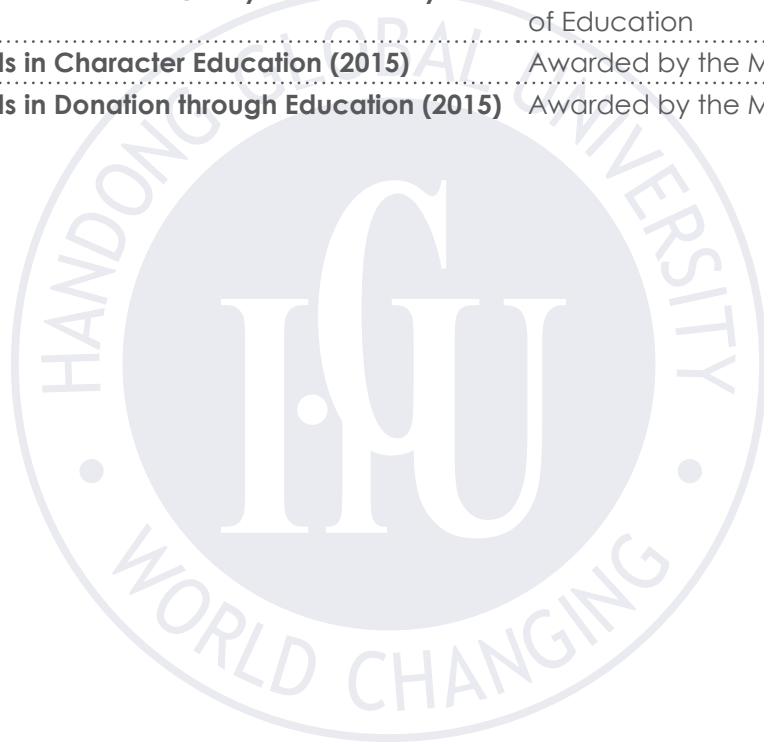
Required documents: School reports (F4,5,6), Recommendation letter, personal essay
 Web link to application information: <http://www.handong.edu/eng/admission/undergraduate/>

D3 Scholarships for international/Hong Kong Students to undergraduate programs

Year one student (Can apply when students submit applications)	Outstanding International Students: · Top 10 % students: Admission fee exemption and 50% deduction on tuition fee · Top 30% students Admission fee exemption and 30% deduction on tuition fee (Recipients must maintain the GPA of at least 3.0 each semester to remain eligible for the scholarship)
Others	<i>There are many other scholarships based on the academic performance and family's financial status.</i>

E Highlights of the university (e.g. signature programs, achievements and special support to international students...etc.)

Handong Leadership School	Summer camp for international students (Since 2015)
Excursion to Korean traditions	DMZ tour, Gwangju tour, Gyeongju tour, Posco tour, Busan Harbour tour, and etc
Free Language Exchange Program	Can exchange students' mother language
International Student Union	International Student Government
One of Top Ten UNAI Global Hub Institutions in the World	UNESCO UNITWIN Program Host University
Korea's Only	<ul style="list-style-type: none"> · OECD Partner University for Internship Program · NGO Associated with the United Nations Department of Public Information
Asia's First American Style Law School	Handong International Law School
University Ranking evaluated by Department of Education (2015)	HGU Ranked in Highest category (A-Ranking)
International Education Quality Assurance System	Institution accreditation valid by the Ministry of Education
Best Awards in Character Education (2015)	Awarded by the Ministry of Education
Best Awards in Donation through Education (2015)	Awarded by the Ministry of Education



A

Basic information

Address	222 Wangsimni-ro, Seongdong-gu, Seoul 04763, Korea													
Type of university	Private													
Brief introduction of the university	<p>Hanyang University(HYU) is composed of two campuses, one in central Seoul and the other in the city of Ansan on the southern outskirts of Seoul. The Seoul Campus is ranked 2nd and the Ansan campus, and the ERICA Campus is ranked 8th in the Joong-Ang Daily Korean University Rankings. Over the years, the Seoul Campus has been rapidly transforming to maintain its status as a top university, while the ERICA Campus has been witnessing explosive growth resulting from its specialization in university-industry cooperation.</p> <table border="1"> <tr> <td rowspan="4">Rankings of Hanyang University</td> <td>QS World University Rankings(2017-2018)</td> <td>155th</td> </tr> <tr> <td>- Civil and Structural Engineering</td> <td>43rd</td> </tr> <tr> <td>- Engineering &Technology</td> <td>86th</td> </tr> <tr> <td>- Social Sciences &Management</td> <td>131st</td> </tr> <tr> <td colspan="2">Asia's Most Innovative Universities by Reuter</td> <td>10th</td> </tr> </table>		Rankings of Hanyang University	QS World University Rankings(2017-2018)	155th	- Civil and Structural Engineering	43rd	- Engineering &Technology	86th	- Social Sciences &Management	131st	Asia's Most Innovative Universities by Reuter		10th
Rankings of Hanyang University	QS World University Rankings(2017-2018)	155th												
	- Civil and Structural Engineering	43rd												
	- Engineering &Technology	86th												
	- Social Sciences &Management	131st												
Asia's Most Innovative Universities by Reuter		10th												
Contact person	<p>Office of International Affairs Email: intladms@hanyang.ac.kr Tel: +82-2-2220-2444~2451, Fax: +82-2-2220-1798 Website: http://study.hanyang.ac.kr</p>													
Undergraduate programs conducted in Korean	<p>Seoul Campus Engineering Humanities Social Sciences Natural Sciences Policy Science Economics and Finance Business Administration Human Ecology Music Fine arts and Physical Education</p>	<p>ERICA Campus Engineering Science and Convergence Technology International Culture Communication and Social Sciences Economics and Business Administration Design Sports and Arts * For more details on each major, please refer to the admission guideline.</p>												
Undergraduate programs conducted in English	[Seoul Campus] International Studies													

B

Tuition fees

Registration fee: ₩977,000

Programs

Tuition fees (Each term)

Humanities / Social Sciences	₩3,688,000
Physical Science / Physical Education	₩4,296,000
Engineering	₩4,861,000
Fine Arts	₩4,873,000
Music	₩5,462,000

* This is 2017 standard and tuition fee is subject to change according to university policy

C

Dormitory (for international students)

1 Dorms on Seoul campus

Type	Gender	Name of dorm	Room type	Fee (6 months)
On-campus	Male	Techno	Room for 2	About ₩700,000 ~ ₩2,300,000
			Room for 3	
			Room for 4	
			(consist of rooms for 1+3)	
		Residence hall 1	Room for 4	
	Female	Hannuri hall	Room for 1	
			Room for 2	
		Gaenari hall	Room for 1	
			Residence hall 1	
		Off-campus	Male	
Room for 1 (Superior)				
Room for 2 (Standard)				
Room for 2 (Superior)				
Room for 2 (Deluxe)				
Majangville	Room for 2 (Superior)			
	Room for 2 (Deluxe)			
Female	Eaton house	Room for 1 (Standard)		
		Room for 2 (Standard)		
		Room for 2 (Superior)		
		Roseville	Room for 2 (Standard)	

* Dorm Website: <http://eng.dormitory.hanyang.ac.kr>

2 Dorms on ERICA campus

Type	Name of dorm	Room type	Fee (6 months)
On-campus	Injae #3	Room for 1	About ₩1,100,000 ~ ₩2,600,000
		Room for 2	
		Changui hall	
		Room for 2	
	Happy residence hall	Room for 2	

* Dorm Website: <http://hydorm.hanyang.ac.kr>

D1 Requirements

1 Language (could state differentiated language requirements for specific programs)

HYU Korean Language Proficiency Standard

Campus	Korean standards
Seoul Campus	(1) Applicants who have TOPIK Level 4 or higher (2) Applicants who have completed Korean language course of Hanyang University and attained Level 5 or higher (3) Applicants who pass the Hanyang university Korean test
ERICA Campus	(1) Applicants who have TOPIK Level 3 or higher (2) Applicants who have completed Korean language course of Hanyang University and attained Level 4 or higher (3) Applicants who pass the Hanyang university Korean test

* Applicants to International Studies are exempted for Korean Language

2 Nationality

International students as well as both of their parents who have foreign citizenship

3 Qualifications

Those who graduated or are expected to graduate from high school

4 Financial status

A certificate authenticating bank balance (USD 20,000 or higher) must be submitted

5 Submission of portfolio

Applicants to the following major are required to submit their artwork.

Campus	College	Department
Seoul Campus	Human Ecology	Interior Design, Clothing and Textiles
	Music	Voice, Composition, Piano, String and Wind Instrument, Korean Traditional Music
	Fine arts and Physical Education	Dance, Physical Education, Sport Industry and Management Theater and Film (Acting major, Play directing major)
ERICA Campus	Design	Jewelry Fashion Design, Surface Interior Design, Technology Product Design, Communication Design, Entertainment Design
	Sports and Arts	Sports Science, Dance and Performing Arts, Applied Music

- * Admission Test will be exempted for departments which require artwork.
- * Theater and Film department (Acting major, Play directing major) conducts additional performance screening.
- * Applicants for departments which do not require an admission test must submit a sample of his/her works. However, applicants for Interior Design, Clothing and Textile, Physical Education and Sports Industry and Management can take the admission test instead of submitting a sample of his/her works.
- Music, Dance and Physical Education: a video CD or USB which includes at least two personal music, dance or physical education compositions and work
- Art and Design: At least two pieces of artwork or Portfolio

6 Written test

Exam type: Essay examination

- * Questions will be given in Korean, English, Chinese, Japanese and Mongolian.
- * Applicants can choose any one of the following languages to answer the questions in the examination - Korean, English, Chinese, Japanese, German, French, Mongolian, Arabic and Vietnamese.
- * Students applying for International Studies must write in English.

7 Interview arrangement

Applicants to the following major are required to take Interview test.

Campus	Department	Interview Type
Seoul Campus	International Studies	English Interview
	Theater and Film (Acting major, Play directing major)	Performance Test

* Online interview is available for applicants abroad.

8 Documents for submission

- Single copy of personal statement and study plan (Hanyang format)
- Official high school graduation certificate
- Official high school 3-year transcript
- Copies of passports (applicants and parents)
- Official document indicating parent-child relationship between applicant and his/her parents
- Certificate authenticating bank balance(USD 20,000 or higher)
- Certificate of TOPIK score
- Certificate of English language proficiency test score (TOEFL, IELTS): Applicants of International Studies must submit the document of IELTS alike; otherwise, other holders can opt for submitting it. (TOEFL IBT 89 and higher, or IELTS 6.5 and higher)*For more details about the documents required, please refer to the admission guideline.

D2 Application timeline to undergraduate programs

Application period	Admissions period	Tuition
Apr – May	Sep	Please refer to section 'B'
Oct – Nov	Mar	Please refer to section 'B'

Web link to application information: <http://study.hanyang.ac.kr>

D3 Scholarships for international/Hong Kong Students to undergraduate programs

Type	Scholarship and contents	Application period
For newly admitted students	<p>Hanyang International Scholarship Program (HISP) HISP grantees are evaluated and selected based on scholastic achievements at their previously attended institution among applicants who are eligible to apply for the HISP.</p> <ul style="list-style-type: none"> • Qualification: GPA from the previously attended institution must be 80 or higher when converted to a 100 scale • Benefits: 100%, 70% or 50% reduction in tuition • Scholarship period: <ul style="list-style-type: none"> - Undergraduate: Freshman 8 semesters / Transfer 4 semesters - Graduate: Master 4 semesters / PhD 8 semesters including research registration and excluding extended study period) * The number of grantees may differ every semester. * Requirement: Scholarship recipients must achieve a minimum 2.0 GPA each semester in order to retain their scholarship. * Hanyang Scholarship for Excellence in Language Proficiency 	Apply while applying for admission
	<p>Hanyang Scholarship for Excellence in Language Proficiency Hanyang Scholarship for Excellence in Language Proficiency is awarded to applicants who have passed the TOPIK Level 5 or 6, or achieved a TOEFL IBT score of 90 or higher or IELTS score of 6.5 or higher. (Only documents submitted during the official application period are acceptable.)</p> <ul style="list-style-type: none"> • Benefits: 30% reduction in tuition • Scholarship period: The first semester only * TOEFL score is not applicable to native speakers of English. 	Selected after admission (no need to apply)
For registered students	<p>Hanyang International Excellence Awards (HIEA) HIEA is awarded to international students who have achieved notable academic progress at Hanyang University.</p> <ul style="list-style-type: none"> • Qualification: Students with valid TOPIK level certificate and Insurance who achieved a minimum GPA of 3.0 the previous semester • Recipients are selected by paper screening and interview. Recipients will receive 70%, 50% or 30% tuition reduction according to their evaluation results. • Scholarship period: One semester 	Apply during semester



TOPIK Scholarship

Foreign students who are currently enrolled for a degree program and obtained TOPIK certificate after the time of admission are eligible. Students who are on a leave of absence OR extended his/her study in undergraduate/graduate level are excluded.

Apply during semester

- Benefits: Admission fee will be provided regardless of the result of examination. Applicants must register for a higher level than their former level obtained. Beginner level is not included.
- Scholarship: The scholarship will be provided when a higher level certificate is acquired. Level 6 holders can be benefitted if their certificates have already expired or if their certificates are having less than 5 months to the expiry date.
- Application Documents:
 - (1) Before test: the test identification
 - (2) After test: TOPIK certificate, copy of a bank account, TOPIK certificate obtained before (only for holder)

E

Admissions to Korean Language Program

Term	Period	Level
Spring, Summer, Fall, Winter	10 weeks per term	Levels 1 - 6

E1 Requirements

1 Language	-
2 Nationality	All except Korean
3 Qualifications	Those who graduated or are expected to graduate from high school
4 Financial status	A certificate authenticating bank balance (USD 9,000 or higher) must be submitted
5 Submission of portfolio	-
6 Written test	Placement test
7 Interview arrangement	Placement test
8 Documents for submission	<ul style="list-style-type: none"> • Completed application with an attached photo(Hanyang format) • Copy of passport • Diploma showing highest level of schooling • Certificate of insurance for international students * For more details, please refer to the website below

Web link to application information: <http://iie.hanyang.ac.kr>

E2 Application timeline (2018)

Semester	Session Dates	Placement test	Application Period
Spring	12 Mar – 21 May	7 Mar	2 Jan – 26 Jan
Summer	11 Jun – 22 Aug	5 Jun	2 Apr – 27 Apr
Fall	10 Sep – 22 Nov	5 Sep	2 Jul – 27 Jul
Winter	10 Dec – 21 Feb 2019	5 Dec	1 Oct – 26 Oct

Application fee: ₩50,000(not refundable)

Tuition fee: ₩1,650,000 for 10 weeks

E3 Scholarships for international/Hong Kong Students to Korean language programs

* Hanyang University IIE offers a variety of scholarships for students who are diligent and have an excellent academic performance.

Scholarships Type	Qualification	Benefits
Hanyang Scholarship	Students who achieved 1st, 2nd, 3rd place in each level	₩2,000,000/ ₩ 3,000,000/ ₩4,000,000 will be given to students according to academic results
Love in Truth and in Deed Scholarship	Students in need of financial support	50% tuition refund
Sibling Scholarship	When siblings register together	10% tuition refund
Working-Scholarship	For students in difficult financial situations while studying abroad. Work as a member of SNS supporters, and promote Institute of International Education (IIE), on each country's SNS	30% to 50% of the tuition fee will be given to students according to their activities

F Principal nominations of member schools of Hong Kong Association of Careers Masters and Guidance Masters (if any)

Quota for each school	1~5 Students per each school
Requirements of candidates (e.g. predicted score in HKDSE)	<ul style="list-style-type: none"> GPA from high school must be 80 or higher when converted to a 100 scale. Applicants for engineering and science students must be excellent in Mathematics and science. PNS is open to all majors.
Special considerations	Applicants with PNS will be considered as scholarship candidates.
* Submission deadline or logistics	Within application period
Remarks	Additional points (3~5/100) will be given to those qualified candidates.

G Highlights of the university (e.g. signature programs, achievements and special support to international students...etc.)

Global Information Center	OIA (Office of International Affairs) provides One-Stop Service for foreign students to help with their university life in Korean, Chinese and English.
Career Development Support	OIA offers career development sessions and job opening notifications for international students.
Counseling for International Students	Students are able to take psychology tests and receive 1:1 counseling about what they feel in their school life.
1:1 Korean Language Lesson	OIA provides 1:1 Korean language support program for those who want to study Korean language and make Korean friends.

A

Basic information

Address	120 Neungdong-ro, Gwangjin-gu, Seoul 05029, Korea
Type of university	Private, Comprehensive
Brief introduction of the university	With 15 colleges offering 63 undergraduate programs, Konkuk is one of South Korea's leading universities. It is recognized as one of top 10 among 370 higher education institutions in the country. It has two campuses located in Seoul and Chungju with an enrollment of 25,000 students.
Contact person	Mr. Junghyuk Lee, Manager Centre for International Faculty and Student Services, Office of International Affairs Email: wanglu@konkuk.ac.kr Phone no.: +82 2 20496202
Undergraduate programs conducted in Korean	<p>Liberal Arts: Korean Language & Literature, English Language & Literature, Chinese Language & Literature, Philosophy, History, Geography, Media & Communication (Journalism & Mass Media), Digital Culture & Contents (Cultural Industries & Content)</p> <p>Sciences: Mathematics, Physics, Chemistry</p> <p>Architecture: Architecture</p> <p>Engineering: Civil & Environmental Engineering, Mechanical Engineering, Electronic & Electrical Engineering, Chemical Engineering, Software, Computer Science & Engineering, Aerospace Information Engineering, Biological Engineering, Industrial Engineering, Integrated Technology Engineering</p> <p>Social Science: Political Science, Economics, Public Administration, International Trade, Applied Statistics, Global Business</p> <p>Business Administration: Business Administration, Management of Technology, Real Estate Studies</p> <p>Sanghuh Life Science: Biological Sciences, Animal Science & Technology, Food Resources Science, Food Science & Biotechnology of Animal Products, Food Distribution Science, Environmental Health Science, Forestry and Landscape Architecture</p> <p>Arts & Design: Communication Design, Industrial Design, Apparel Design, Living Design, Contemporary Arts, Film & Moving Image-Moving Image, Film & Moving Image-Directing, Film & Moving Image-Acting</p>
Undergraduate programs conducted in English	English tracks are estimated to be open in the field of International Commerce & Economics Program and International Business Program in 2018 Fall semester.



B

Tuition fees

Registration fee: ₩938,000

Programs

Tuition fees (Each semester)

College of Liberal Arts (Departments other than Geography)	₩3,482,000
College of Social Science	
College of Business Administration	
College of Liberal Arts (Department of Geography)	₩4,178,000
College of Sciences	
College of Engineering (Department of Integrated Technology Engineering)	
College of Sanghuh Life Science	
College of Art & Design (Apparel Design)	
College of Architecture	₩4,874,000
College of Engineering (Departments other than Integrated Technology Engineering)	
College of Art & Design (Departments other than Apparel Design)	

C

Dormitory (for international students)

Type	Single room	Double room	4-people room
Fee		₩1,653,000/per semester (4 months)	
Eligibility (for international students)	International students are guaranteed to stay in the dormitory in the first semester but may not stay in case that there are more than 10 penalty points caused by violating rules. There is a deposit of KRW 200,000, which is refundable.		

D

Admissions to undergraduate programs

D1 Requirements

1 Language	TOPIK Level 3 or above [or] Korean Language Program Completion Certificate issued by Konkuk Language Institute with Level 3 or above
2 Nationality	Applicants and their parents are foreign residents without Korean citizenship
3 Qualifications	<ul style="list-style-type: none"> · Freshman: Applicants who have graduated or are expected to graduate from accredited primary and secondary schools overseas · Transfer: Applicants who have completed or are expected to complete at least 2 years of a 4-year undergraduate degree program with at least 50 percent of the credits required for graduation at an accredited Korean or foreign university with good academic standing [or] have graduated or are expected to graduate from a 2- or 3-year associate degree program at an accredited Korean or foreign college with good academic standing
4 Financial status	Bank statement of applicants or their parents with a minimum deposit of USD 20,000 or above
5 Submission of Portfolio	USB drive with a demo reel: Applicable to Department of Film and Moving Image- Acting applicants Art portfolio (5 pages in A4 size): Applicable to all other College of Art and Design applicants

6 Written test	-
7 Interview arrangement	-
8 Documents for submission	Application form, Applicant record, Personal statement, Affidavit of support, Letter of consent for academic background check, Color photograph, Birth Certificate, Identification cards of applicants and their parents, Passport, Bank statement, Language Proficiency Requirement, etc.

D2 Application timeline to undergraduate programs

Application period	Admissions period	Tuition (₩)
Apr – May	Sep	Please refer to section 'B'
Oct – Nov	Mar	Please refer to section 'B'

Web link to application information:

http://www.konkuk.ac.kr/eng/jsp/Admissions/undergraduate_international_students.jsp

D3 Scholarships for international/Hong Kong Students to undergraduate programs

For new students (1st semester)	30% tuition waiver	<ul style="list-style-type: none"> · TOPIK Level 3 or · Korean Language Program Completion Certificate issued by Konkuk Language Institute with Level 3
	40% tuition waiver	<ul style="list-style-type: none"> · TOPIK Level 4 or · Korean Language Program Completion Certificate issued by Konkuk Language Institute with Level 4
	50% tuition waiver	<ul style="list-style-type: none"> · TOPIK Level 5 or · Korean Language Program Completion Certificate issued by Konkuk Language Institute with Level 5
	60% tuition waiver	<ul style="list-style-type: none"> · TOPIK Level 6 or · Korean Language Program Completion Certificate issued by Konkuk Language Institute with Level 6
Current student (From 2nd semester) (based on the academic performance of those with a completion of 15 credits or above)	20% tuition waiver	GPA 3.0 or above
	40% tuition waiver	GPA 3.2 or above
	70% tuition waiver	GPA 3.5 or above
	100% tuition waiver	GPA 4.0 or above

E

Admissions to Korean Language Program

Term	Period	Level
Spring, Summer, Fall, Winter	10 weeks per term	Levels 1 - 6

E1 Requirements	
1 Language	-
2 Nationality	-
3 Qualifications	A high school diploma or equivalent qualification
4 Financial status	A Certificate of bank deposit over \$9,000(USD) under student's name
5 Submission of portfolio	-
6 Written test	Reading, Writing, Speaking test * If an applicant does not take a placement test, he/she will automatically be placed in level 1 (Basic) class
7 Interview arrangement	-
8 Documents for submission	A completed application form, A photocopy of a passport, A copy of diploma or degree from the last school attended (Certified by the Ministry of Education or Apostilled document needed), A certificate of bank deposit balance, A personal statement and a statement of purpose , A copy of a proof of foreign student insurance , A financial statement of a Korean sponsor (if any) etc.

Web link to application information: <http://kfli.konkuk.ac.kr/en/>

E2 Application timeline		
Application period	Admissions period	Tuition (₩)
One month prior to the beginning of classes	Spring Term: Mar Summer Term: Jun Fall Term: Sep Winter Term: Dec	Application fee: ₩50,000 Tuition fee: ₩1,600,000 (200 class hours/1 term)

E3 Scholarships for international/Hong Kong Students to Korean language programs	
Attendance Scholarship	Attendance rate 100%(50 days, 200 hours): 10% of tuition can be refunded after re-registering for the following term.
Best Academic Scholarship	Students who have achieved the best score in each class will be rewarded with 10% of tuition after they have enrolled in the following term. (Grade Point Average is higher than 80)

F Principal nominations of member schools of Hong Kong Association of Careers Masters and Guidance Masters (if any)

Quota for each school	5 students for each school
Requirements of candidates (e.g. predicted score in HKDSE)	A recommendation letter from the principal. Applicants should meet minimum requirements for international undergraduate admission at Konkuk such as financial status and Korean language level
Special considerations	Conditional admission letter issued by Konkuk University
* Submission deadline or logistics	Refer to international undergraduate admission schedule
Remarks	Other incentives such as scholarship for language courses or opportunities to join overseas study program run by Konkuk can be negotiable on one-on-one basis.



Highlights of the university (e.g. signature programs, achievements and special support to international students...etc.)

- Located in the heart of Seoul, the capital of South Korea.
- IEQAS(International Education Quality Assurance System)certified by Ministry of Education
- Scholarship-based Study Abroad Opportunity for international students
- Quality services for international students such as academic tutoring system, orientation, field trips, Korean language tutoring
- Student-friendly environment such as well-organized subway station with two lines, on-campus dormitory, university general hospital
- Beautiful campus with a big lake called Il-gam and safe campus with 15 emergency call boxes
- Various Courses in English: Konkuk offers more than 20% out of total courses in English



A

Basic information

Address	Seoul Campus: 26 Kyungheedaer-ro, Dongdaemun-gu, 02447, Seoul, Korea Global Campus: 1732 Deogyong-daero, Giheung-gu, 17104, Yongin-si, Korea
Type of university	Private
Brief introduction of the university	Kyung Hee University was founded in 1949 around the moral intention of "creating a civilized world." Since its establishment, Kyung Hee has followed a tradition of combining academic and practical achievement, the pursuit of universal values, and harmony. In 1965, the International Association of University Presidents (IAUP) was established, and its subsequent activities include contributions to the UN International Day of Peace in 1981. In 1993, UNESCO recognized the efforts of Kyung Hee University on the international stage with its Peace Education Award. Kyung Hee's Seoul, Global, and Gwangneung campuses are part of a comprehensive and future-oriented academic system that serves 25,508 undergraduate students, including 3,008 international students, and employs 1,419 full-time professors in 21 colleges and 82 departments.
Contact person	Tommy S. Ji, Section Chief Division of International Students and Scholar Services Office of International Affairs Email: tommy81@khu.ac.kr Phone no.: +82-31-201-3965
Undergraduate programs conducted in Korean	All programs are offered in Korean
Undergraduate programs conducted in English	Business, Hotel Management, International Studies, Nuclear Engineering

B

Tuition fees

Registration fee: ₩912,000

Programs	Tuition fees (Each term)
College of Humanities, College of Politics and Economics, College of Management, College of Hotel and Tourism Management, College of International Studies, College of Foreign Language and Literature	₩3,367,000
College of Human Ecology, College of Science	₩3,934,000
College of Physical Education	₩4,420,000
College of Engineering, College of Electronics and Information, College of Applied Science, College of Life Sciences, College Art and Design	₩4,590,000

C

Dormitory (for international students)

Dormitory	Location	Fee (4 Months)	Room Type	Cooking Facilities
Sehwa Hall	On Campus	₩970,000	Double	X
I-HOUSE I-II (1st Floor)	Off Campus	₩1,200,000	Double	X
I-HOUSE I-II (2nd Floor and above)	Off Campus	₩1,400,000	Double	O
Woojungwon (Global Campus)	On Campus	₩1,374,000	Triple	O

D

Admissions to undergraduate programs

D1 Requirements

1 Language	Korean Track: Topik Level 3 or above English Track: IELTS Level 5.5, TOEFL iBT 80 or above
2 Nationality	Applicant and his/her both parents must be non-Korean citizens
3 Qualifications	Complete or expected to complete secondary education prior to admission
4 Financial status	Bank certificate indicating a minimum balance of USD 20,000
5 Submission of Portfolio	-
6 Written test	-
7 Interview arrangement	Online interview is available
8 Documents for submission	Application Form, Original Copy of bank certificate, Statement of Purpose, High School Diploma, High School transcripts, Documents verifying relationships with parents, Language Certificate

D2 Application timeline to undergraduate programs

Application period	Admissions period	Application Fee (₩)
1st intake: Early Mar 2nd intake: Early May	Sep	₩150,000
1st intake: Early Sep 2nd intake: Early Nov	Mar	₩150,000

D3 Scholarships for international/Hong Kong Students to undergraduate programs

Category	Scholarship Type	Eligibility	Scholarship	Note
Admission Scholarship	Admission Scholarship A	Students with the highest interview score from each college	Full tuition for the first semester	Freshmen or Transfer Students
	Admission Scholarship B	Students who submitted TOPIK Level 6 by the designated document submission period	Full tuition for the first semester	
	Admission Scholarship C	Students who submitted TOPIK Level 5 by the designated document submission period	Half of the tuition for the first semester	
	Admission Scholarship D	Students recommended by the dean of IIE/ILE among students who completed the course, abiding by the recommendation standard (Maximum of 5 beneficiaries per semester)	Full tuition for the first semester (Seoul Campus)	
	Admission Scholarship E	Students who scored within the top 50% in the interview evaluation and completed more than 4 semesters at ILE	Full tuition for the first semester (Global Campus)	
	Admission Scholarship F	Students who are accepted to the College of Foreign Languages and scored within the top 50% of the interview evaluation	Full tuition for the first semester (Global Campus)	
	Admission Scholarship G	Students who are accepted at the College of Engineering or the College of Electronics and Engineering, and scored within the top 50% in the interview evaluation	Full tuition for 4 years (Limited to Global Campus) * If the beneficiary gets 3.5 GPA or above, the beneficiary will receive full tuition continuously (Period: Mar 2018 ~ Feb 2022)	Freshmen
Post-Enrollment	Academic Encouragement Scholarship	Select honor students among applicants with 3.0 GPA from the previous semester	Graded payment	Enrolled Students
	TOPIK Encouragement Scholarship	Provided to students who earned TOPIK Level 5 or Level 6 while enrolled at KHU (TOPIK Level 5 or Level 6 scholarship beneficiaries at the time of admission are exempted)	Maximum of 2 times ₩300,000 is provided per time	

E

Admissions to Korean Language Program

Term	Period	Level
Spring, Summer, Fall, Winter	10 weeks per term	Levels 1 - 5



E1 Requirements

1 Language	-
2 Nationality	Foreigners or overseas Koreans
3 Qualifications	Age above 13
4 Financial status	Bank certificate indicating a min. balance of USD 10,000
5 Submission of portfolio	-
6 Written test	Level test will be required
7 Interview arrangement	-
8 Documents for submission	Application Form, Original Copy of bank certificate, Statement of Purpose, Graduation certificate and transcripts from the last attended school, Documents verifying relationships with parents

E2 Application timeline

Semester	Registration Period (Applicants with visa requirement)	Registration Period (Applicants without visa requirement)	Level Test & Orientation (OT)	Dates	
2017	Spring	2016.12.19 ~ 2017.01.20	2017.01.23 ~ 2017.02.24	2017.02.28	2017.03.06 ~ 2017.05.12
	Summer	2017.03.20 ~ 2017.04.21	2017.04.10 ~ 2017.05.12	2017.05.17	2017.05.22 ~ 2017.07.28
	Autumn	2017.06.19 ~ 2017.07.21	2017.07.24 ~ 2017.08.18	2017.08.23	2017.08.28 ~ 2017.11.10
	Winter	2017.09.18 ~ 2017.10.20	2017.10.09 ~ 2017.11.10	2017.11.15	2017.11.20 ~ 2018.01.26
2018	Spring	2017.12.18 ~ 2018.01.19	2018.01.22 ~ 2018.02.23	2018.02.28	2018.03.05 ~ 2018.05.11
	Summer	2018.03.19 ~ 2018.04.20	2018.04.09 ~ 2018.05.11	2018.05.16	2018.05.21 ~ 2018.07.27
	Autumn	2018.06.18 ~ 2018.07.20	2018.07.22 ~ 2018.08.17	2018.08.22	2018.08.27 ~ 2018.11.02
	Winter	2018.09.10 ~ 2018.10.12	2018.10.01 ~ 2018.11.02	2018.11.07	2018.11.12 ~ 2019.01.18

E3 Scholarships for international/Hong Kong Students to Korean language programs

-

F

Principal nominations of member schools of Hong Kong Association of Careers Masters and Guidance Masters (if any)

Quota for each school

*The World is
a Global Village and
the Peoples of the World
are its Citizens.*
Global Cooperation
Society.

G

Highlights of the university (e.g. signature programs, achievements and special support to international students...etc.)

The university has a cooperative relationship with 523 sister schools in 77 countries around the world. The university also has an active exchange program, including the Global Collaborative Summer Program, as a part of its international educational offerings.

A

Basic information

Address	35 Baekbeom-Ro, Mapo-Gu, Seoul 04107, Korea
Type of university	Private
Brief introduction of the university	We have 27 departments in 9 schools in our undergraduate programs. Business Administration, Mass Communications, Global Korean Studies are top-ranking majors in Korea. We are offering a multiple-major system which allows students to choose any majors without limitation. We have more than 600 major combinations among 8 schools.
Contact person	Tony Kim, Admission Officer Office for International Students Admissions Office Email: jaeh605@sogang.ac.kr Phone no.: +82 10 38038688
Undergraduate programs conducted in Korean	Basically we are offering all courses in Korean.
Undergraduate programs conducted in English	27 Departments offer courses in English. They account for 25-30% of undergraduate courses.

B

Tuition fees

Registration fee: ₩969,000

Programs	Tuition fees (Each term)
Schools of Humanities, International Cultures, Social Sciences, Economics, Communication, Business Administration	₩3,607,000
School of Integrated Knowledge	₩3,831,000
School of Natural Sciences	₩4,218,000
School of Engineering	₩4,713,000

C

Dormitory (for international students)

Type	Single room	Double room	4-people room
Fee (4 months)	-	Approx. ₩1,500,000 per semester	-
Eligibility (for international students)	All international students · Priority of placement is offered to international students.		

D

Admissions to undergraduate programs

D1 Requirements

1 Language	Korean: Topik Level 3 or above, Korean Language Center (4-year University) Level 3 or above
2 Nationality	All except Korean
3 Qualifications	Graduation of S6
4 Financial status	-
5 Submission of Portfolio	-
6 Written test	No test
7 Interview arrangement	No interview
8 Documents for submission	High school diploma, high school transcript, passport copies of applicant and parents(father and mother), identification card copies, family relations certificate, etc.

D2 Application timeline to undergraduate programs

Application period	Admissions period	Application Fee (₩)
Apr – Jul	Sep	₩3,607,000 ~ 4,713,000
Jul – Jan	Mar	₩3,607,000 ~ 4,713,000

Web link to application information: admission.sogang.ac.kr

D3 Scholarships for international/Hong Kong Students to undergraduate programs

Admission Scholarship I	Tuition fee 100% for 8 semesters (Including admission fee)
Admission Scholarship II	Tuition fee 50% for 1 semester (Including admission fee)
Admission Scholarship III	Tuition fee 25% for 1 semester(Including admission fee)
Admission Scholarship IV	TOPIK Level 4 or above : Admission fee exemption
Global Scholarship II	15% ~ 100% based on student's financial status

E

Admissions to Korean Language Program

(2018 KAP200 / Korean for Academic Purpose: This course is run for students who intend to seek admission to undergraduate or graduate university programs in Korea.)

Term	Period	Level
Spring	10 weeks per term (Mar. 12~ May. 24)	Levels 1 – 6, 7(Korean Specialist Course)
Summer	10 weeks per term (Jun. 7~Aug. 24)	Levels 1 – 6, 7(Korean Specialist Course)
Fall	10 weeks per term (Sep. 5~Nov. 20)	Levels 1 – 6, 7(Korean Specialist Course)
Winter	10 weeks per term (Dec. 4~Feb. 25, 2019)	Levels 1 – 6, 7(Korean Specialist Course)

E1 Requirements

1 Language	-
2 Nationality	All except Korean
3 Qualifications	High school graduate
4 Financial status	Bank balance letter (USD 5,000)
5 Submission of portfolio	-
6 Written test	4 days before Semester Start
7 Interview arrangement	4 days before Semester Start (1 on 1 Interview) * No phone interview
8 Documents for submission	(1) Copy of passport (2) Certificate of high school graduation (3) Bank balance letter (USD 5,000)

E2 Application timeline

Application period	Admissions period	Tuition (₩)
Spring (Dec 6, 2017 ~ Jan 31, 2018)	Mar 7 ~ 12	₩1,830,000
Summer (Mar 12 ~ Apr 30)	Jun 1 ~ 6	₩1,830,000
Fall (Jun 8 ~ Jul 30)	Aug 31 ~ Sep 5	₩1,830,000
Winter (Sep 6 ~ Oct 31)	Nov 30 ~ Dec 4	₩1,830,000

Application fee: ₩60,000

Tuition fee: ₩1,770,000 (1 term with 200 contact hours)

E3 Scholarships for international/Hong Kong Students to Korean language programs

Scholarship System for Academic Excellence

Top Student Scholarship	1 student per level. 50% discount off of tuition for the following session. (Attendance must be 90% or above, with a score of 90 points or more on the speaking interview and a total of 80 points or above in other subjects)
Excellent Student Scholarship	1 student per class. 20% discount off of tuition for the following session. (Attendance must be 90% or above, with a score of 90 points or more on the speaking interview and a total of 80 points or above in other subjects)

F Principal nominations of member schools of Hong Kong Association of Careers Masters and Guidance Masters (if any)

Quota for each school -

G Highlights of the university (e.g. signature programs, achievements and special support to international students...etc.)

Excellent Education Program for International Students	(1) Korea's top Korean language center (2) Multiple Major System (3) Global Tutoring Program
Customized Support for International Students	(1) Various scholarships available only to international students (2) Priority dormitory placement (3) Tuition fee discounts for Korean Language Education Center · Undergraduate Students: waiver (up to 2 sessions) · Graduate Students: 30% off

A

Basic information

Address	50 Yonsei-ro Seodaemun-gu, Seoul, 03722, Republic of Korea	
Type of university	Private	
Brief introduction of the university	Yonsei University is the oldest university in Korea, established in 1885. Its mission has been simple yet ambitious: to provide future global leaders with the highest level of interdisciplinary and international education. While the tools and content of education have changed over the past 132 years, Yonsei remains dedicated to educating students in the spirit of "Truth and Freedom," our motto. Its 300,000 graduates are serving in both the public and private sectors across the globe. Many of them are key players, setting new international standards, in their respective fields.	
Contact person	Yoon Yeojin International Undergraduate Admissions Email: jinny.yoon@yonsei.ac.kr Phone no.: +82-2-2123-3213	
Undergraduate programs conducted in Korean	College of Liberal Arts College of Business and Economics College of Business College of Sciences College of Engineering College of Life Science and Biotechnology College of Theology	College of Social Sciences College of Music College of Human Ecology College of Sciences in Education College of Medicine/Dentistry/Nursing Global Leadership Division
Undergraduate programs conducted in English	Underwood International College (UIC) Homepage : https://uic.yonsei.ac.kr E-mail : uicadm@yonsei.ac.kr Phone : +82-2-2123-3923	

B

Tuition fees

Registration fee: ₩1,034,000

Programs

Underwood International College (UIC)

Global Leadership Division (GLD)

Tuition fees (Each term)

₩7,212,000

₩6,120,000

C

Dormitory (International Campus for freshmen)

Type	Single room	Double room	Triple room
Fee (4 months)	-	₩1,416,000	₩964,000
Additional Information	The security deposit (₩100,000) will be refunded at the end of the semester. Freshmen should spend their first two semesters (the freshman year) at the International Campus located in Incheon for Residential College course. For second-year students and above, take note that Seoul Campus dormitories have different fees.		

D

Admissions to undergraduate programs

D1 Requirements

1 Language	There is no requirement for Korean and English Language proficiency. However, applicants of the Department of Pre-Medicine, Pre-Dentistry and Nursing MUST submit proof of Korean language proficiency such as a Level 5 certification at Yonsei KLI, TOPIK Level 5 or higher.
2 Nationality	Applicants and both their parents should have non-Korean nationality * If a student or either one of the student's parents has a dual citizenship with Korea, the student is not eligible for this track.
3 Qualifications	Applicants must graduate from high school(G6)
4 Essential Documents	<ol style="list-style-type: none"> (1) Completed Application Form: A printout of application form which has been submitted online (2) [Apostille/Consulate Authentication] High School Diploma or Certificate of (Expected) Graduation (3) [Apostille/Consulate Authentication] Official Transcripts of all attended high schools or of the equivalence (4) Personal Statement (English or Korean) (5) Documents verifying foreign nationality of the applicant, documents verifying foreign nationality of his or her parents (e.g. copy of passports or identification cards), and legal documents evidencing the relationship between the applicant and his or her parents
5 Optional Documents	<ol style="list-style-type: none"> (1) Recommendation letter or Counselor reference(English or Korean) (2) Documents verifying applicants' proficiency in the Korean language: Scores from the Korean Language Proficiency Test(TOPIK) or certificates from the Korean language institutes that are affiliated with any university in Korea (3) Additional materials: Records of personal distinctions, reports of standardized test scores, such as ACT, AP, ATAR, GCE-A Level, IB, HKDSE, NCEA, SAT and etc. (Foreign language proficiency)
6 Additional Information	There is no requirement of financial status, submission of portfolio and no additional test like written test or interview.

D2 Application timeline to undergraduate programs

Application period	Admissions period	Application Fee (₩)
Jan 3 (Wed), 2018 10:00 ~ Jun 7 (Thu), 2018 17:00	Sep 2018	₩150,000
Aug 1 (Wed), 2018 10:00 ~ Nov 15 (Thu), 2018 17:00	Mar 2019	₩150,000

Web link to application information: <http://iadmission.yonsei.ac.kr/>

D3 Scholarships for international/Hong Kong Students to undergraduate programs

Yonsei awards a limited number of merit scholarships to academically-qualified international first-year undergraduate students who demonstrate exceptional accomplishment, leadership, intercultural communicative competence and intellectual promise. Ranging from \$3,000 per year to the full cost of attendance, these scholarships are typically renewable for four years and recipients may be invited to participate in servant leadership development and enrichment opportunities as an additional benefit of their award. Recipients of these awards are notified of their selection in early July or January.

Admissions to Korean Language Program

Program	Term	Period	Level
Regular Program	Spring, Summer, Fall, Winter	10 weeks per term	Levels 1 – 6 Levels 1 – 8 (for Western students)
Intensive Korean Program (韓語強化課程)	Spring, Summer, Fall, Winter	10 weeks per term	Language Program for Chinese only Levels 1 – 6
Summer Special Program	Summer	5 weeks	Levels 1 – 6
3-Week Program	Spring 1,2, Summer 1,2, Winter	3 weeks per term	Levels 1 – 8
Evening Program	Spring, Summer, Fall, Winter	10 weeks per term	Levels 1 – 8
University Korean Program	1st, 2nd, 3rd, 4th, 5th, 6th	7 weeks per term	Levels 1 – 5 Offered at International campus

E1 Requirements

1 Language	There is no requirement for Korean Language proficiency.
2 Nationality	All countries
3 Qualifications	Applicants should have graduated from high school (G6).
4 Submission of portfolio	Submitted through the KLI website(www.yskli.com)
5 Written test	-
6 Interview arrangement	-
7 Essential Documents	(1) A copy of passport (2) A copy of the transcript and diploma from the last school attended (3) Health insurance (4) For those who wish to stay in a dormitory: A copy of the Medical Certificate (This medical report must contain the result of Tuberculosis test (x-ray))
8 Optional Documents (D-4 visa applicants)	(1) A copy of financial document (certificate of deposit balance over \$9,000 (USD)) (2) In case of using parents' financial statement, a copy of Family Relationship Certificate or Birth Certificate is also required.

E2 Application timeline

E2.1 - Regular Program

Term	Application period	Period of semester	Tuition (₩)
Spring	Oct 16, 2017 ~ Jan 19, 2018	Mar 8 ~ May 18	₩1,730,000
Summer	Jan 22 ~ Apr 20	Jun 11 ~ Aug 21	₩1,730,000
Fall	Apr 23 ~ Jul 20	Sep 6 ~ Nov 22	₩1,730,000
Winter	Jul 23 ~ Oct 19	Dec 5 ~ Feb 22, 2019	₩1,730,000

Application fee: ₩80,000

E2.1 - Summer Special Program

Term	Application period	Period of semester	Tuition (₩)
Summer	Mar 5 ~ May 18	Jun 27 ~ Jul 31	₩1,781,000

Application fee: ₩80,000

E2.1 - 3-Week Program

Term	Application period	Period of semester	Tuition (₩)
Spring 1	Nov 20, 2017 ~ Jan 19, 2018	Mar 5 ~ Mar 23	₩965,000
Spring 2	Jan 22 ~ Mar 23	May 30 ~ Jun 21	₩965,000
Summer 1	Apr 23 ~ Jun 22	Aug 2 ~ Aug 23	₩965,000
Summer 1	May 14 ~ Jul 13	Aug 29 ~ Sep 18	₩965,000
Winter	Oct 22 ~ Dec 15	Jan 29 ~ Feb 21, 2019	₩965,000

Application fee: ₩80000

E2.1 - Evening Program

Term	Application period	Period of semester	Tuition (₩)
Spring	Dec 4, 2017 ~ Mar 2, 2018	Mar 29 ~ Jun 14	₩867,000
Summer	Feb 26 ~ May 25	Jun 21 ~ Aug 28	₩867,000
Fall	May 21 ~ Aug 24	Sep 20 ~ Dec 6	₩867,000
Winter	Sep 17 ~ Dec 14	Jan 8 ~ Mar 21, 2019	₩867,000

Application fee: ₩80000

E2.1 - University Korean Program

Term	Application period (D-4 visa applicants)	Period of semester	Tuition (₩)
1st	Jan 4 ~ Feb 2 (Dec 1, 2017 ~ Jan 5, 2018)	Mar 8 ~ Apr 25	₩1,600,000
2nd	Mar 5 ~ Apr 3 (Feb 1 ~ Mar 2)	May 3 ~ Jun 26	₩1,600,000
3rd	May 2 ~ Jun 1 (Apr 4 ~ May 1)	Jul 5 ~ Aug 23	₩1,600,000
4th	Jul 4 ~ Aug 3 (Jun 4 ~ Jul 3)	Sep 5 ~ Oct 31	₩1,600,000
5th	Sep 5 ~ Oct 2 (Aug 6 ~ Sep 4)	Nov 6 ~ Dec 24	₩1,600,000
6th	Nov 5 ~ Dec 3 (Oct 4 ~ Nov 2)	Jan 7 ~ Feb 27, 2019	₩1,600,000

Application fee: ₩80000

E3 Scholarships for international/Hong Kong Students to Korean language programs

Students who are attending more than 1 semester (Regular, Intensive, Evening, University Korean Program) are qualified to receive a scholarship from 2nd semester. Scholarships will be given to students with excellent grades and attendance, outstanding personality, and are recommended by their teacher.

F Principal nominations of member schools of Hong Kong Association of Careers Masters and Guidance Masters (if any)

Quota for each school

There is no quota per school. We can take into consideration his or her academic achievements and potential with the principal's nomination.

*** Submission deadline or logistics**

The nominations should follow the application schedule. Under the rolling admission policy, international applicants will be notified of the results as soon as two to four weeks after completing the online application and submitting the necessary supporting documents.

Remarks

Principal Nomination is applicable except UIC and College of Medicine/Dentistry/Nursing. Information for 2018 September admission has been uploaded to the university homepage.

* Requirements of candidates

Major/Department	Subjects of HKDSE	Requirements
College of Liberal Arts/ College of Social Sciences/ College of Human Ecology/ Global Leadership Division	English Language, Mathematics and Liberal Studies should be included	21 or above of Total Grade Points (Best Five Subjects)
College of Business/ College of Business and Economics	English Language, Mathematics (Compulsory Part) and Extended Part (Calculus and Statistics) and Liberal Studies should be included	
College of Engineering/ Math/Physics/Astronomy/ Earth Systems Science/ Atmospheric Sciences	English Language, Mathematics (Compulsory Part) and Extended Part (Calculus and Statistics) and Physics should be included	24 or above of Total Grade Points (Best Five Subjects)
College of Life Science and Biotechnology/ Chemistry	English Language, Mathematics (Compulsory Part) and Extended Part (Calculus and Statistics) and Chemistry or Biology should be included	

G Highlights of the university (e.g. signature programs, achievements and special support to international students...etc.)

Global Leadership Division (GLD)

- Global Leadership Division (GLD) intends to shape students into global leaders based on the foundations of a deeper understanding of the Korean language, culture and society.
- Consists of 484 students from 26 countries
- Three majors: 'Korean Culture', 'International Commerce', 'Korean Language & Culture Education'
- Students can choose their major at the end of freshman year and GLD students can have multiple majors within GLD and other colleges at Yonsei University
- Within GLD, students are not only able to grow academically, but also as a social human being through the education and guidance system that includes GLD Faculty, Academic Advisors, and Residential Masters who give the utmost support for each student

Underwood International College (UIC)

- All-English liberal arts undergraduate education
- Common Curriculum for freshmen: reading and writing, intensive seminars in literature, philosophy, history, critical reasoning, science, and research methods
- Students can choose their major at the end of freshman year and only UIC students can have multiple majors within UIC and other colleges at Yonsei University
- Upper-year students can take UIC seminars outside their majors ranging from creative arts (writing, filmmaking, music) to business and law. Thesis writing is optional for senior students.



